



110 TON MOBILIFT

by
LIFT SYSTEMS, INC.



***Global Leaders in Specialized
Lifting Equipment!***



MOBILIFT

110 TON

STANDARD EQUIPMENT

ENGINE:

Cummins Diesel Engine: QSB4.5P
160 hp (116 Kw) intermittent @ 2500 rpm
U.S. EPA Tier 3
CARB Tier 3
EU Stage III
Torque @ 1500 rpm, 466 ft-lbs (632 N-m)

PUMP:

Sundstrand 90 series drive pump

CONTROL SYSTEM:

CARL (Computer Assisted Remote Lifting) Control System.
Monitors Boom Angle, Boom Extension, Pressure, Counterweight Load Pin. Automatic Shutdown for overload conditions. Large easy to read display screen with push button navigation and dial adjustment.

CONTROLS:

Separate controls for each function.
Combination of foot pedal, joystick, and push button controls allows for multiple functions to be performed at the same time.

DRIVE:

Poclain MK35 drive motors (qty. 3)
(2) in front, (1) in rear steering box.

WHEELS:

Front: qty. (4)
Diameter: 28"
Width: (2) @ 24" and (2) @ 16"
Rear: qty. (2)
Diameter: 28"
Width: 16"

Replaceable polyurethane composition

STEERING:

90 degree steering of rear wheels.

OSCILLATING REAR STEERING BOX:

Keeps all steering wheels in contact with ground.

GRADABILITY:

Unloaded maximum grade is 20%
Loaded maximum grade is 8%

GROUND BEARING PRESSURE:

Loaded Front Tires: 634 psi maximum
Unloaded Rear Tires: 502 psi maximum

TRAVEL SPEED UNLOADED:

Travel Mode - High Gear = 0.0 to 1.70 mph
Travel Mode - Low Gear = 0.0 to 0.86 mph
Work Mode - Low Gear = 0.0 to 0.42 mph

TELESCOPING COUNTERWEIGHT:

Standard counterweight section telescopes 5' using (2) hydraulic cylinders. Push button control.

HYDRAULIC RESERVOIR:

200 gallons (757 liters)

BOOM:

High strength three section telescoping boom with powered first section and manually extended second section.
Replaceable wear pads on all sliding sections.

BOOM LIFT CYLINDERS:

Twin cylinders capable of lifting and lowering with a full load. Safety holding valves installed on both cylinders. Spherical bearings ensure constant alignment with the boom.

BOOM TELESCOPE CYLINDER:

Single cylinder capable of telescoping the boom in and out with a full load. Safety holding valve is installed on the cylinder.

LIFTING EYES:

Qty. one (1) centrally located on main boom and one (1) located on power boom both with 110 ton capacity.

WINCH:

Two speed high performance hydraulic winch. Integral, full capacity load brake. Wide, low profile drum. 500' - 1" wire rope capacity.

WEIGHT:

58,200 lbs.
Standard "A" counterweight included

COUNTERWEIGHTS:

"A" - non-removable counterweight installed in unit
"B" - qty. (2) - 8,270 lbs each. - 16,540 lbs total
"C" - qty. (1) - 9,200 lbs
"D" - qty. (1) - 9,200 lbs
"E" - qty. (1) - 9,200 lbs

TIE DOWN / LIFTING EYES:

Tie down / lifting eyes installed for securing unit during transport and for lifting of the unit.

DRIVER PROTECTION GUARD:

Structural overhead guard for operator protection.

OTHER STANDARD FEATURES:

Back up alarm, horn, strobe light, operator seat complete with safety belt and electric switch.

OPTIONAL EQUIPMENT

RADIO REMOTE CONTROL:

Radio remote control allows full machine functionality from a wireless radio remote. Allows operator optimal view of load. Emergency safety shutdown switch is standard.

110 TON SPINNER:

Allows for 360 degree rotation of load from picking eye.

EXHAUST PURIFIER:

Reduces diesel particulate matter.

JIB EXTENSION:

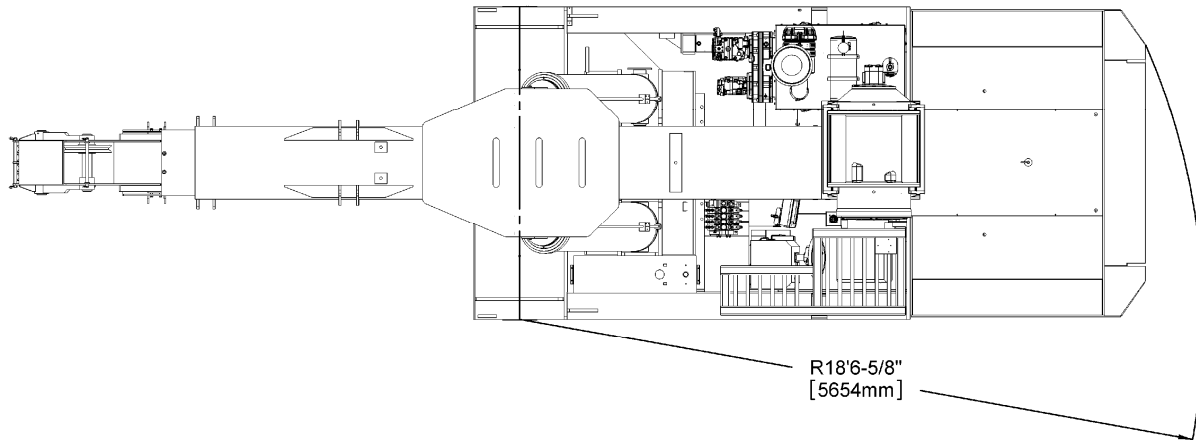
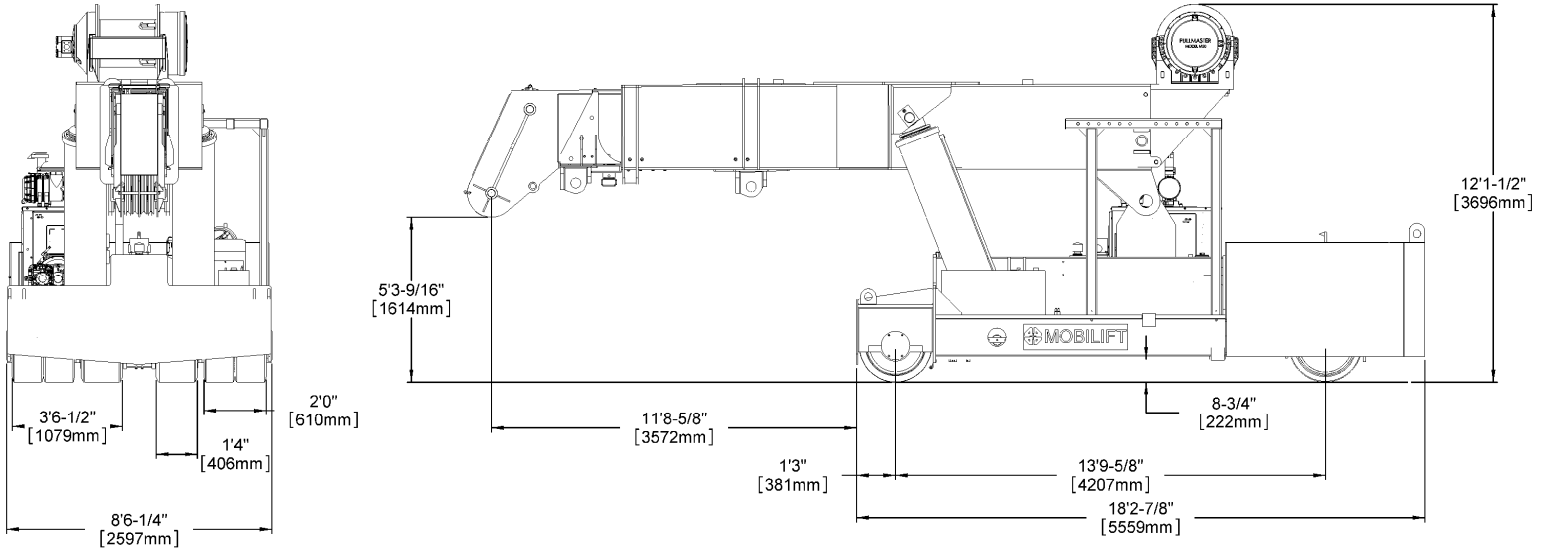
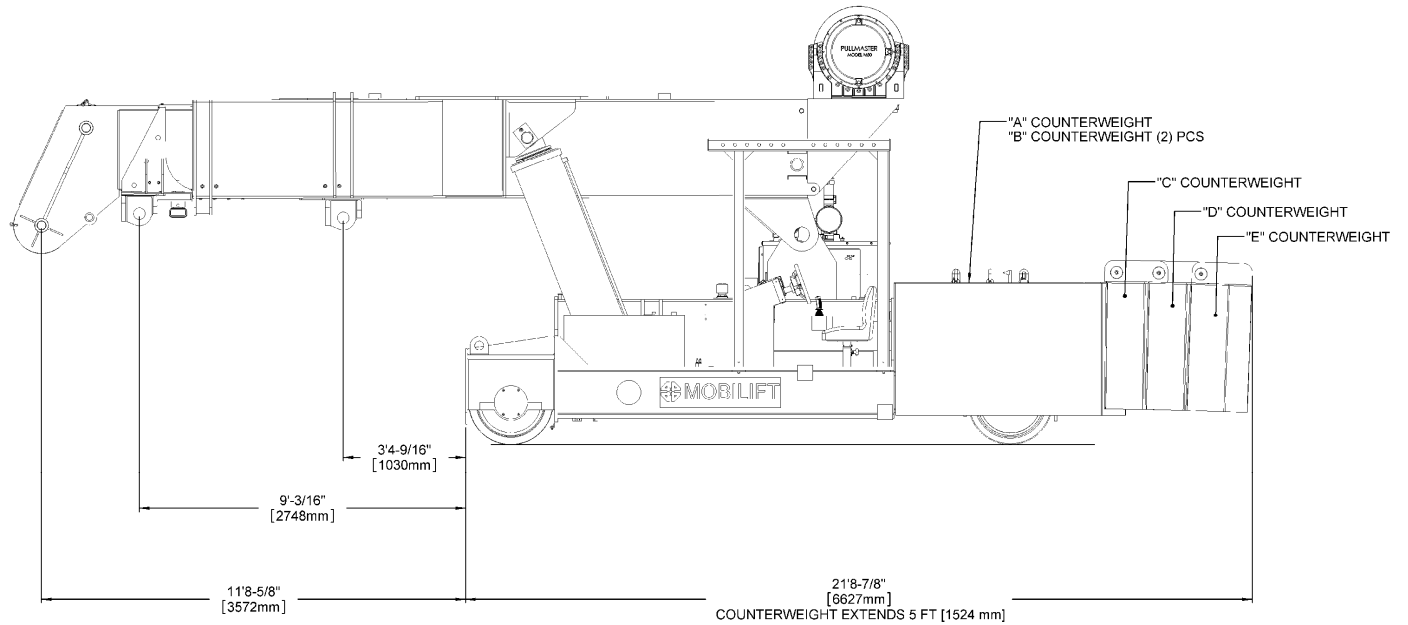
Consult factory for available capacities



MOBILIFT

110 TON

DIMENSIONAL DATA

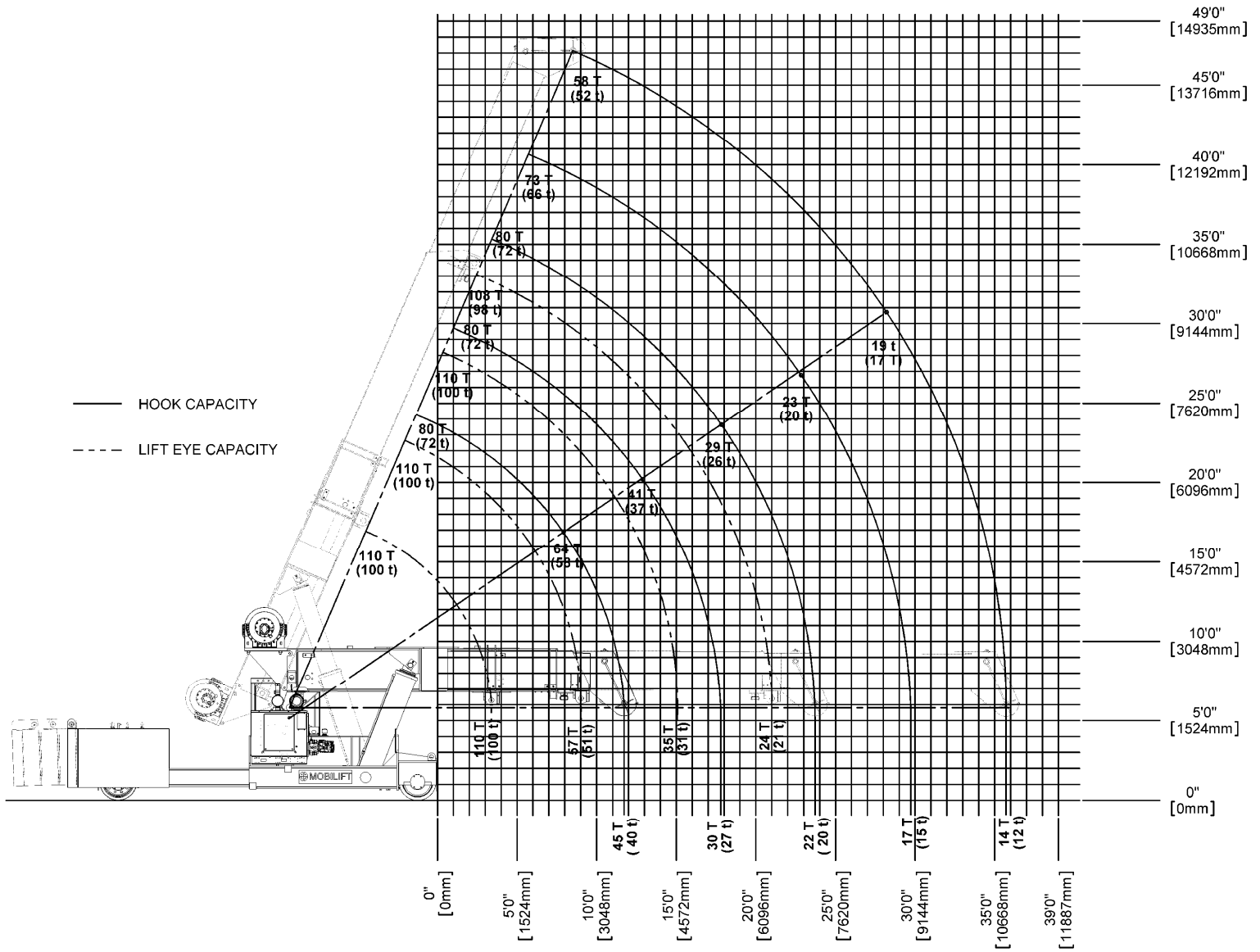




MOBILIFT

110 TON

REFERENCE CAPACITY / RANGE DIAGRAM



NOTE

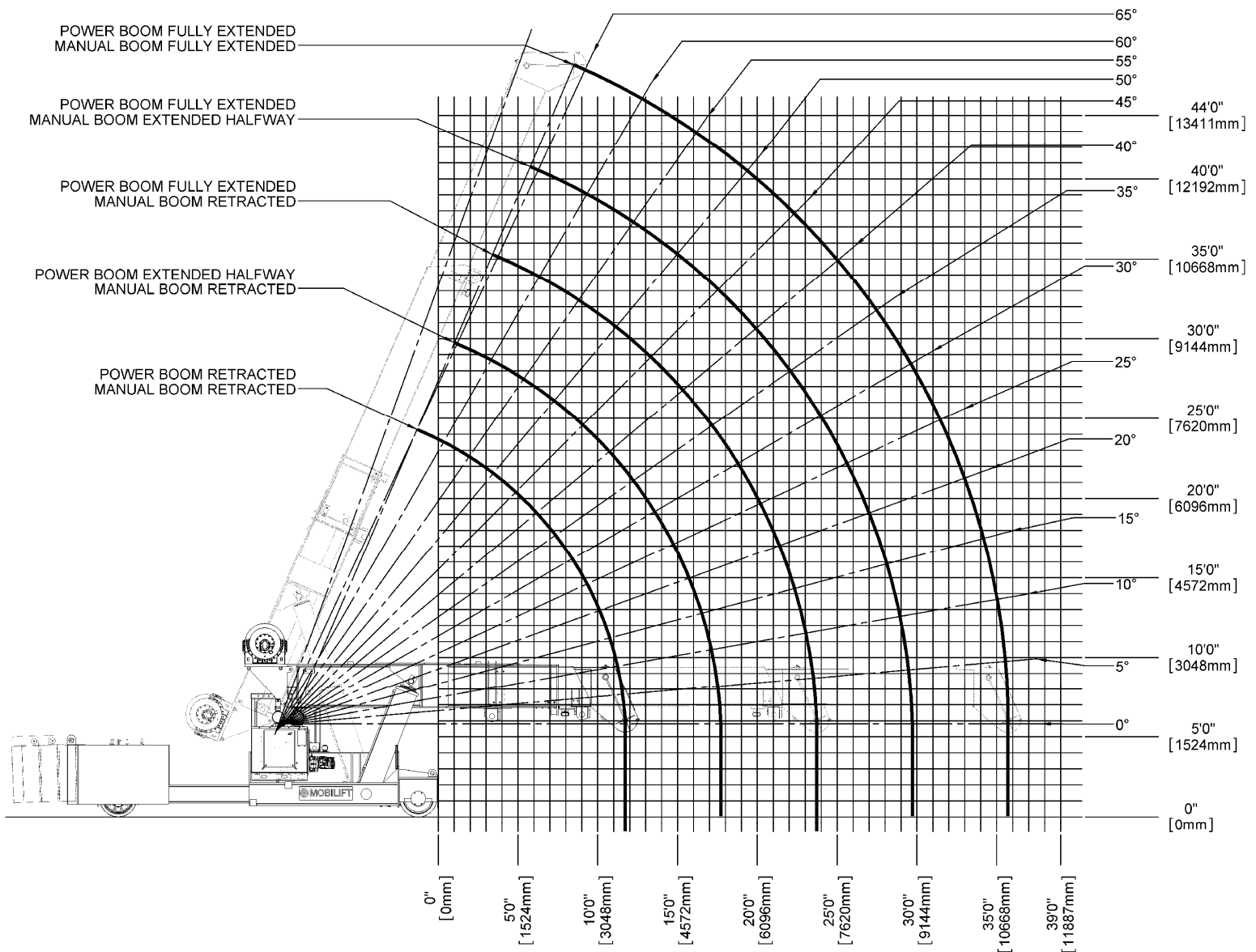
1. The above chart is for reference purposes only.
2. Never use the above chart for lift planning calculations
3. Lift plan calculations are to be determined solely by the load charts and range diagrams that are issued for the specific serial numbered machine that is to be used for the specific planned lift.



MOBILIFT

110 TON

RANGE DIAGRAM



NOTE

1. The above chart is for reference purposes only.
2. Never use the above chart for lift planning calculations
3. Lift plan calculations are to be determined solely by the load charts and range diagrams that are issued for the specific serial numbered machine that is to be used for the specific planned lift.



MOBILIFT

110 TON

LOAD CHARTS FOR "A" COUNTERWEIGHT (HOOK BLOCK)

LOAD RADIUS (FEET FROM FRONT)	110 TON MOBILIFT LOAD CHART												MLLC220 15190210	
	FOR USE WITH HOOK BLOCK ONLY STANDARD NON-REMOVABLE "A" COUNTERWEIGHT													
	FULLY EXTENDED BOOM LENGTH (FEET)						FULLY RETRACTED BOOM LENGTH (FEET)							
△°	21		33		45	△°	21		33		45			
0	63	160,000				63	160,000							
1	60	160,000				60	157,100							
2	57	131,600				57	107,200							
3	54	99,400				54	80,800							
4	50	79,500				50	64,400	66	63,800					
5	46	66,000				46	53,300	64	52,700					
6	42	56,200				42	45,300	62	44,700					
7	38	48,700				38	39,200	60	38,600					
8	33	42,900				33	34,400	58	33,900					
9	28	38,200				28	30,500	56	30,000	66	31,400			
10	23	34,400				21	27,400	54	26,900	64	28,200			
11	0	29,200				10	23,100	52	24,300	63	25,600			
12	SEE NOTE (E)					49	22,000	62	23,000	62	2,300			
13						47	20,100	60	21,300	60	21,300			
14						45	18,400	59	19,600	59	19,600			
15						42	17,000	57	18,100	57	18,100			
16						39	15,700	56	16,800	56	16,800			
17						36	14,500	54	15,600	54	15,600			
18						33	13,500	52	14,600	52	14,600			
19						30	12,600	51	13,600	51	13,600			
20						26	11,700	49	12,800	49	12,800			
21						22	11,000	47	12,000	47	12,000			
22						16	10,300	46	11,300	46	11,300			
23						44	13,900	44	10,600	44	10,600			
24						42	13,200	42	10,000	42	10,000			
25						40	12,500	40	9,500	40	9,500			
26						38	11,900	38	9,000	38	9,000			
27						36	11,300	36	8,500	36	8,500			
28						33	10,700	33	8,000	33	8,000			
29						31	10,200	31	7,600	31	7,600			
30						28	9,800	28	7,200	28	7,200			
31						26	9,300	26	6,900	26	6,900			
32						22	8,900	22	6,500	22	6,500			
33						19	8,500	19	6,200	19	6,200			
34						14	8,100	14	5,900	14	5,900			
35						0	7,600	0	7,600	0	7,600			

LOAD CHARTS FOR "A" AND "B" COUNTERWEIGHT (HOOK BLOCK)

LOAD RADIUS (FEET FROM FRONT)	110TON MOBILIFT LOAD CHART												MLLC221 15190210	
	FOR USE WITH HOOK BLOCK ONLY STANDARD NON-REMOVABLE "A" COUNTERWEIGHT WITH "B" COUNTERWEIGHT ADDED													
	FULLY EXTENDED BOOM LENGTH (FEET)						FULLY RETRACTED BOOM LENGTH (FEET)							
△°	21		33		45	△°	21		33		45			
0	63	160,000				63	160,000							
1	60	160,000				60	160,000							
2	57	160,000				57	160,000							
3	54	159,600				54	124,500							
4	50	128,200				50	99,800	66	99,100					
5	46	106,900				46	83,000	64	82,400					
6	42	91,400				42	70,900	62	70,300					
7	38	79,700				38	61,700	60	61,100					
8	33	70,600				33	54,400	58	53,900					
9	28	63,200				28	48,600	56	48,100	66	49,600			
10	21	57,100				21	43,900	54	43,400	64	44,700			
11	0	48,900				0	37,400	52	39,400	63	40,700			
12	SEE NOTE (E)					49	36,000	62	37,300	62	37,300			
13						47	33,100	60	34,400	60	34,400			
14						45	30,600	59	31,800	59	31,800			
15						42	28,400	57	29,600	57	29,600			
16						39	26,400	56	27,600	56	27,600			
17						36	24,700	54	25,800	54	25,800			
18						33	23,100	52	24,200	52	24,200			
19						30	21,700	51	22,800	51	22,800			
20						26	20,500	49	21,500	49	21,500			
21						22	19,300	47	20,400	47	20,400			
22						16	18,200	46	19,300	46	19,300			
23						0	16,600	44	18,300	44	18,300			
24						42	23,300	42	17,400	42	17,400			
25						40	22,200	40	16,600	40	16,600			
26						38	21,300	38	15,800	38	15,800			
27						36	20,300	36	15,100	36	15,100			
28						33	19,500	33	14,400	33	14,400			
29						31	18,700	31	13,800	31	13,800			
30						28	18,000	28	13,200	28	13,200			
31						26	17,300	26	12,600	26	12,600			
32						22	16,600	22	12,100	22	12,100			
33						19	16,000	19	11,600	19	11,600			
34						14	15,400	14	11,200	14	11,200			
35						0	14,500	0	10,400	0	10,400			

NOTE:

Specifications are provided in imperial dimensions. All equipment dimensions, designs, specifications, calculations, etc., as described, are subject to change at manufacturer's discretion at any time and without notice. Weights are approximate and may vary. Data herein is for informational purposes only and will not be construed to guarantee suitability of equipment for any particular as performance may vary with conditions encountered. Warranty will apply as written in standard contract form upon purchase of equipment. Capacities are for reference only and must not be used for any serial numbered machine. Serial numbered load charts may be obtained from Lift Systems, Inc.



MOBILIFT

110 TON

LOAD CHARTS FOR "A", "B", AND "C" COUNTERWEIGHT (HOOK BLOCK)

LOAD RADIUS (FEET FROM FRONT)	110 TON MOBILIFT LOAD CHART												MLLC222
	STANDARD NON-REMOVABLE "A" COUNTERWEIGHT WITH "B", "C" COUNTERWEIGHT ADDED												11190210
	FULLY EXTENDED BOOM LENGTH (FEET)						FULLY RETRACTED BOOM LENGTH (FEET)						
△°	21		33		45	△°	21		33		45		
0	63	160,000				63	160,000						
1	60	160,000	LOADED BOOM ANGLE			60	160,000	LOADED BOOM ANGLE					
2	57	160,000				57	160,000						
3	54	160,000				54	160,000						
4	50	160,000				50	160,000						
5	46	134,600				46	104,600						
6	42	115,300				42	89,400						
7	38	100,700				38	78,000						
8	33	89,300				33	69,000						
9	28	80,100				28	61,800						
10	21	72,500				21	55,800						
11	0	62,300				0	47,800						
12	SEE NOTE (E)					SEE NOTE (E)							
13													
14													
15													
16													
17													
18													
19													
20													
21													
22													
23													
24													
25													
26													
27													
28													
29													
30													
31													
32													
33													
34													
35													

LOAD CHARTS FOR "A", "B", "C", AND "D" COUNTERWEIGHT (HOOK BLOCK)

LOAD RADIUS (FEET FROM FRONT)	110 TON MOBILIFT LOAD CHART												MLLC223
	STANDARD NON-REMOVABLE "A" COUNTERWEIGHT WITH "B", "C", "D" COUNTERWEIGHT ADDED												11190210
	FULLY EXTENDED BOOM LENGTH (FEET)						FULLY RETRACTED BOOM LENGTH (FEET)						
△°	21		33		45	△°	21		33		45		
0	63	160,000				63	160,000						
1	60	160,000	LOADED BOOM ANGLE			60	160,000	LOADED BOOM ANGLE					
2	57	160,000				57	160,000						
3	54	160,000				54	160,000						
4	50	160,000				50	152,800						
5	46	160,000				46	127,500						
6	42	140,300				42	109,200						
7	38	122,700				38	95,400						
8	33	108,900				33	84,500						
9	28	97,800				28	75,800						
10	21	88,700				21	68,500						
11	0	76,300				0	58,900						
12	SEE NOTE (E)					SEE NOTE (E)							
13													
14													
15													
16													
17													
18													
19													
20													
21													
22													
23													
24													
25													
26													
27													
28													
29													
30													
31													
32													
33													
34													
35													

NOTE:

Specifications are provided in imperial dimensions. All equipment dimensions, designs, specifications, calculations, etc., as described, are subject to change at manufacturer's discretion at any time and without notice. Weights are approximate and may vary. Data herein is for informational purposes only and will not be construed to guarantee suitability of equipment for any particular as performance may vary with conditions encountered. Warranty will apply as written in standard contract form upon purchase of equipment. Capacities are for reference only and must not be used for any serial numbered machine. Serial numbered load charts may be obtained from Lift Systems, Inc.



MOBILIFT

110 TON

LOAD CHARTS FOR "A", "B", "C", "D", and "E" COUNTERWEIGHT (HOOK BLOCK)

LOAD RADIUS (FEET FROM FRONT)	110 TON MOBILIFT LOAD CHART										MLLC224	
	FOR USE WITH HOOK BLOCK ONLY										11/18/2010	
	STANDARD NON-REMOVABLE "A" COUNTERWEIGHT WITH "B", "C", "D", "E" COUNTERWEIGHT ADDED											
	FULLY EXTENDED BOOM LENGTH (FEET)					FULLY RETRACTED BOOM LENGTH (FEET)						
	△°	21	33	45		△°	21	33	45			
0	63	160,000				63	160,000					
1	60	160,000				60	160,000					
2	57	160,000				57	160,000					
3	54	160,000				54	160,000					
4	50	160,000	66	160,000		50	160,000	66	160,000			
5	46	160,000	64	160,000		46	151,800	64	151,200			
6	42	160,000	62	160,000		42	130,200	62	129,600			
7	38	145,800	60	145,300		38	113,800	60	113,300			
8	33	129,500	58	129,000		33	101,000	58	100,400			
9	28	116,400	56	115,900	66	117,300	28	90,600	56	90,100	66	91,500
10	21	105,600	54	105,100	64	106,500	21	82,100	54	81,600	64	83,000
11	0	90,900	52	96,100	63	97,400	0	70,600	52	74,500	63	75,800
12	SEE NOTE (E)		49	88,400	62	89,700	SEE NOTE (E)		49	68,500	62	69,800
13			47	81,800	60	83,100			47	63,300	60	64,500
14			45	76,100	59	77,300			45	58,800	59	60,000
15			42	71,100	57	72,300			42	54,900	57	56,000
16			39	66,700	56	67,800			39	51,400	56	52,500
17			36	62,700	54	63,900			36	48,300	54	49,400
18			33	59,200	52	60,300			33	45,500	52	46,600
19			30	56,000	51	57,100			30	43,000	51	44,100
20			26	53,100	49	54,200			26	40,700	49	41,800
21			22	50,500	47	51,600			22	38,600	47	39,700
22			16	48,100	46	49,100			16	36,700	46	37,800
23			0	44,400	44	46,900			0	33,900	44	36,000
24					42	44,900					42	34,400
25					40	43,000					40	32,900
26					38	41,300					38	31,600
27					36	39,600					36	30,300
28					33	38,100					33	29,100
29					31	36,700					31	28,000
30					28	35,400					28	26,900
31					26	34,100					26	26,000
32					22	33,000					22	25,000
33					19	31,900					19	24,200
34					14	30,900					14	23,400
35					0	29,200					0	22,100

NOTES:

- A) FLY SECTION CAPACITIES ARE LIMITED BY ANGLE. DO NOT USE LOAD RADIUS WHEN USING FLY SECTION.
- B) RATINGS ABOVE THE BOLD LINE ARE BASED ON THE MACHINE'S HYDRAULIC OR STRUCTURAL STRENGTH AND NOT STABILITY.
- C) RATINGS BELOW THE BOLD LINE ARE BASED ON 85% OF TIPPING.
- D) ALL CAPACITIES ARE IN POUNDS.
- E) TELESCOPE CYLINDER MUST BE FULLY RETRACTED AND AGAINST STOPS.

WARNING

FOR BOOM LENGTHS LESS THAN 44' WITH FLY SECTION EXTENDED, THE RATED LOADS ARE DETERMINED BY BOOM ANGLE ONLY. IN THE COLUMN HEADED BY 45' BOOM. FOR BOOM ANGLES NOT SHOWN USE RATINGS OF THE NEXT LOWER BOOM ANGLE.

CAUTION!

DO NOT EXTEND OR RETRACT COUNTERWEIGHT WITH ANY LOAD SUSPENDED ON HOOK OR FORKS.

NOTE:

Specifications are provided in imperial dimensions. All equipment dimensions, designs, specifications, calculations, etc., as described, are subject to change at manufacturer's discretion at any time and without notice. Weights are approximate and may vary. Data herein is for informational purposes only and will not be construed to guarantee suitability of equipment for any particular as performance may vary with conditions encountered. Warranty will apply as written in standard contract form upon purchase of equipment. Capacities are for reference only and must not be used for any serial numbered machine. Serial numbered load charts may be obtained from Lift Systems, Inc.



MOBILIFT

110 TON

POWER BOOM LIFTING EYE LOAD CHARTS WITH FULL COUNTERWEIGHT (A,B,C,D,E WEIGHTS)

LOAD RADIUS (FEET FROM FRONT)	110 TON MOBILIFT LOAD CHART											MLLC234	
	FOR USE WITH POWER BOOM LIFT EYE ONLY											11/19/2010	
	STANDARD NON-REMOVABLE "A" COUNTERWEIGHT WITH "B","C","D", "E" COUNTERWEIGHT ADDED												
	FULLY EXTENDED BOOM LENGTH (FEET)					FULLY RETRACTED BOOM LENGTH (FEET)							
	21		27		33			21		27		33	
		LOADED BOOM ANGLE		LOADED BOOM ANGLE				LOADED BOOM ANGLE		LOADED BOOM ANGLE		LOADED BOOM ANGLE	
0	58	220,463					58	220,463					
1	54	220,463	64	220,463			54	220,463	64	220,463			
2	50	220,463	61	220,463			50	220,463	61	220,463			
3	46	220,463	58	220,463	65	213,700	46	220,463	58	220,463	65	213,700	
4	42	213,200	55	213,200	63	203,300	42	179,600	55	179,500	63	179,500	
5	37	192,200	53	192,100	61	192,100	37	149,900	53	149,900	61	149,900	
6	32	164,900	50	164,800	59	164,800	32	128,500	50	128,400	59	128,400	
7	25	144,200	47	144,100	56	144,100	25	112,200	47	112,200	56	112,100	
8	17	128,100	43	127,900	54	127,900	17	99,500	43	99,400	54	99,400	
9	0	114,900	40	114,900	52	114,900	0	89,200	40	89,100	52	89,100	
10	SEE NOTE (D)		36	104,200	49	104,100	SEE NOTE (D)		36	80,700	49	80,700	
11			32	95,200	47	95,200			32	73,700	47	73,600	
12			28	87,600	44	87,600			28	67,700	44	67,600	
13			22	81,100	42	81,000			22	62,500	42	62,500	
14			15	75,400	39	75,300			15	58,100	39	58,000	
15			0	70,400	36	70,300			0	54,100	36	54,100	
16					32	65,900					32	50,600	
17					29	62,000					29	47,500	
18					25	58,500					25	44,800	
19					20	55,300					20	42,300	
20					14	52,500					14	40,000	
21					0	49,800					0	38,000	

NOTES:

- A) RATINGS ABOVE THE BOLD LINE ARE BASED ON THE MACHINE'S HYDRAULIC OR STRUCTURAL STRENGTH AND NOT STABILITY.
- B) RATINGS BELOW THE BOLD LINE ARE BASED ON 85% OF TIPPING.
- C) ALL CAPACITIES ARE IN POUNDS.
- D) TELESCOPE CYLINDER MUST BE FULLY RETRACTED AND AGAINST STOPS.

CAUTION!

DO NOT EXTEND OR RETRACT COUNTERWEIGHT WITH ANY LOAD SUSPENDED ON HOOK OR FORKS.

NOTE:

The ratings above the bold line are based upon machine's hydraulic or structural strength and not stability.

Ratings below bold line are based on 85% of tipping.

All capacities are in pounds.

CAUTION!

Do not extend or retract counterweight with any load suspended on hook.

LIFT SYSTEMS, INC.

OFFICE:

1505 - 7th Street
East Moline, IL 61244

MAILING ADDRESS:

P.O. Box 906
Moline, IL 61266

TEL:

+1-309-764-9842

FAX:

+1-309-764-9848

EMAIL:

liftit@lift-systems.com

WEB:

www.lift-systems.com